

INFIRAY OUTDOOR
CABIN SERIES

Thermal Imaging Monocular

The InfiRay Outdoor CABIN Series is a powerful, compact optic that operates easily with one hand. The CABIN is available with multiple lens options and its 50hz 12 μ m sensor, featuring InfiRay's next-generation MATRIX III processing, ensures an unmatched viewing experience. Standard features of the CABIN Series include a quick focus f/1.0 lens, stadiametric rangefinder, image and video capture, wireless connectivity, picture in-picture, and an LED flashlight to guarantee you have everything you'll need in the palm of your hand.





CABIN SERIES CBL19 CBL25

SENSOR	
Resolution	384×288
Pixel Size	12 μm
Frame Rate	50hz
Image Processing	MATRIX III
Core	InfiRay Micro II 384
OPTICS	
Objective Lens	19 mm f/1.0 25 mm f/1.0
Magnification	2× 2.5×
Digital Zoom	4×
Field of View	13.8° × 10.4° 10.5° × 7.9°
Detection Range	1070 Yards 1375 Yards
Display Type	LCOS
Display Resolution	1280×960
Color Palettes	White Hot, Black Hot, Red Hot, Color, Highlight
P.I.P.	Yes
Rangefinder	Stadiametric
Eye Relief	20 mm
Diopter Range	-5 to +5
ELECTRONICS	
Onboard Recording	Video and Image
Onboard Storage	16 GB
Wireless Connectivity	Video and Image via App.
Data/Power Connector	USB-C
Power Supply	USB-C External, IBP-2 Li-ion Battery Pack (3+ Hours)
Laser	640 nm: 4.5mW CW
Start Up Time	<10 Seconds, Instant from Standby
PHYSICAL	
Size	6.49" × 1.96" × 3.34"
Weight	14.22 Oz
ENVIRONMENTAL/WARRANTY	
Warranty	5 Years
Housing Material	ABS
Ingress Protection	IP67
Operation Temperature	-4°F~122°F

In-line Button Design
Easy-to-use, even with gloves.

IBP-2 Battery Pack
Field-swappable lithium battery with 3+ hours of run-time.

Variable Focus Light
3W LED with dim and high modes and a 50-yard throw.

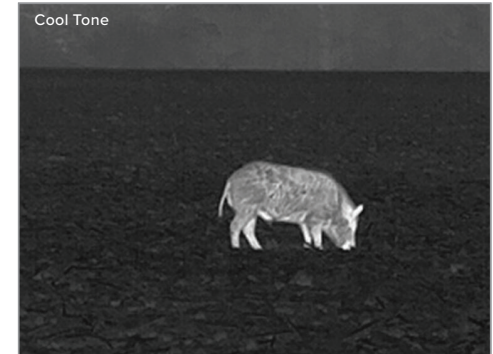
High-Definition Display
1280×960 resolution provides clarity and detail while warm and cool display modes allow for flexibility.

Laser Pointer
Red visible laser for nighttime navigation and direction.

USB-C Connectivity
Battery charging or data transfer via a USB-C connection.

Multiple Lens Options
Available with a 19 mm or 25 mm lens.

Quick Focus Knob
Near-to-far focus in less than 100° of rotation guarantees effortless adjustment.



The CABIN Series provides an ultra-clear image with its powerful 12 μm detector and combines optical performance with an easy-to-use design and intuitive feature set designed for the hunter and outdoorsman. The CABIN Series also features two user-selectable display tones to further customize your experience. The cool tone allows for higher scene contrast, while the warm tone prevents eye fatigue during viewing. Check out our website at irayusa.com/cabin to learn more or find your local dealer.

REGISTRATION: irayusa.com/register
WARRANTY: irayusa.com/warranty
SUPPORT/SERVICE: irayusa.com/support

NOTE: These products may be subject to export and foreign trade control laws of the United States and may not be exported without prior approval of the U.S. Department of State. Learn more at irayusa.com/ITAR. The thermal images shown are for illustrative purposes only and may vary in real world usage. Specifications are subject to change without notice. For the most up-to-date specs, go to irayusa.com. Not responsible for typographical errors. Ver 1.2-12282022

IRAYUSA
800 Railhead Road #316
Fort Worth TX 76106
800-769-7125
682-499-0047
info@irayusa.com